

MONTHLY MEMBERSHIP PROGRESS REPORT

LOCATION ONTARIO

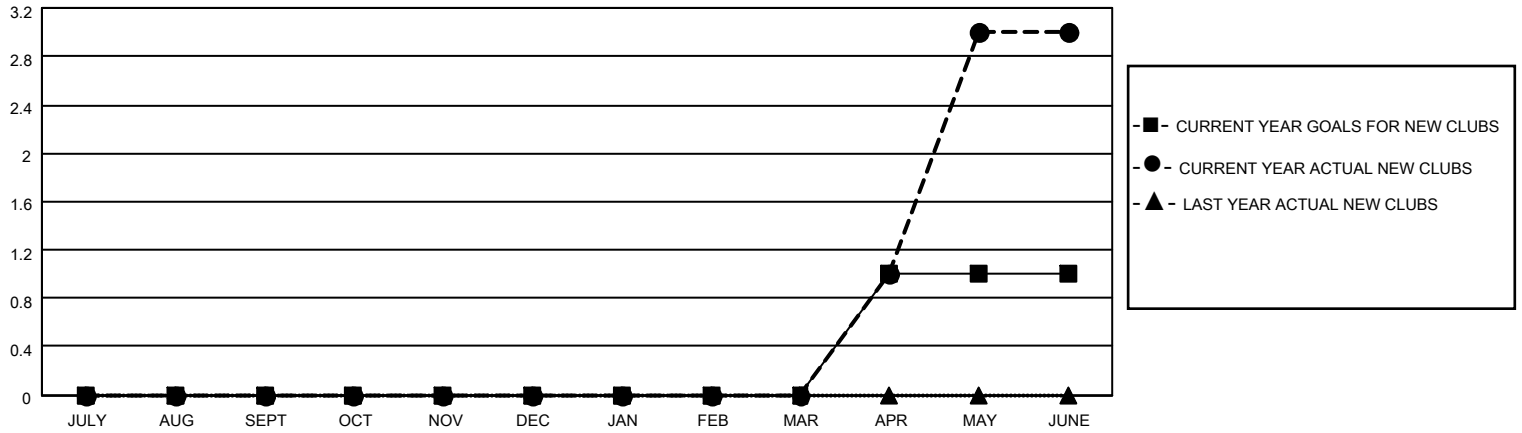
District A 16

Results as of: 6/30/2021

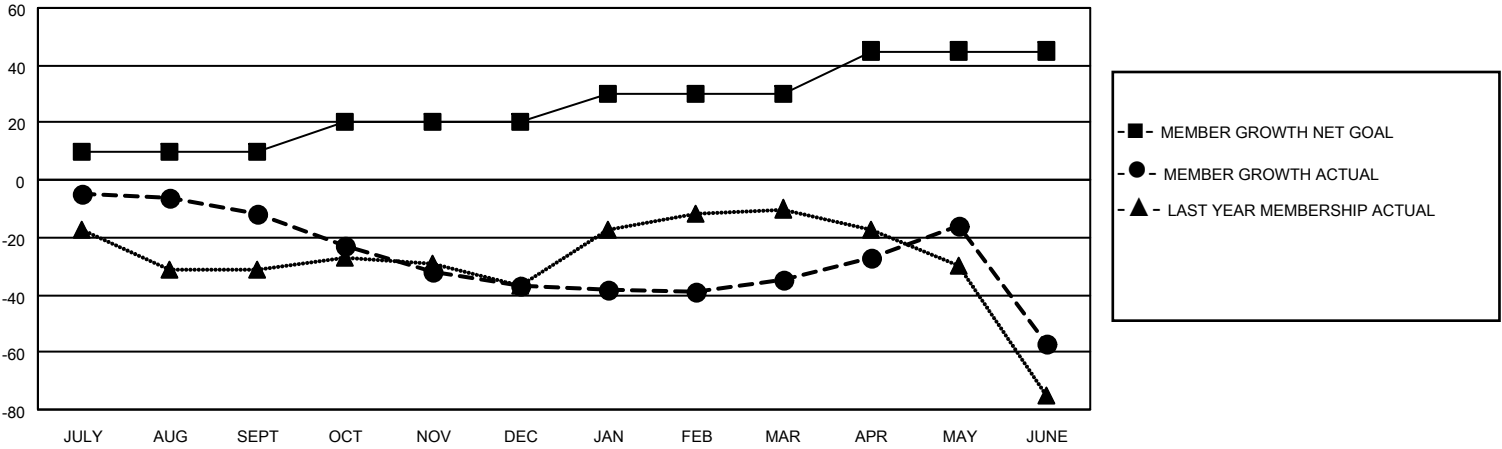
| Clubs | | | |
|-----------------------|---------------|-----------|---------------|
| RESULTS FOR 2020-2021 | | | |
| QUARTER | NEW CLUB GOAL | NEW CLUBS | DROPPED CLUBS |
| JULY/AUG/SEPT | 0 | 0 | 0 |
| OCT/NOV/DEC | 0 | 0 | 0 |
| JAN/FEB/MAR | 0 | 0 | 0 |
| APR/MAY/JUNE | 1 | 3 | 0 |

| Members | | | |
|-----------------------|------------------------|----------------------|--|
| RESULTS FOR 2020-2021 | | | |
| QUARTER | MEMBER GROWTH NET GOAL | MEMBER GROWTH ACTUAL | DROPPED MEMBERS ACTUAL (including transfers) |
| JULY/AUG/SEPT | 10 | 14 | 20 |
| OCT/NOV/DEC | 10 | 17 | 36 |
| JAN/FEB/MAR | 10 | 13 | 10 |
| APR/MAY/JUNE | 15 | 42 | 60 |

GOALS AND ACTUAL NEW CLUBS CUMULATIVE



GOALS AND ACTUAL MEMBERS CUMULATIVE



| | | |
|-------------------------------------|---|--|
| DROPPED CLUBS: 0 | 26 CLUBS OF 55 ADDED 1 OR MORE NEW MEMBERS | <u>GENDER DISTRIBUTION</u> |
| <u>DROPPED MEMBERS</u> | CLICK HERE FOR CUMULATIVE MEMBERSHIP DATA | MALE 733 (65.45%) |
| DECEASED 14 | | FEMALE 387 (34.55%) |
| CLUB CANCELLED 0 | | TOTAL FAMILY UNIT MEMBERS 288 |
| OTHER 112 | | FAMILY MEMBERS PAYING HALF DUES 151 |
| TOTAL 126 | | |